

## FACTSHEET RISK REDUCTION MEASURES

### Building the baulk near the village Kuřimany (Pilot area Strakonice)

#### Where was it implemented?

Village Kuřimany, District Strakonice (South Bohemia, Czech Republic)

#### Fields of action

- Farmland

#### Related to measure from the catalogue of measures

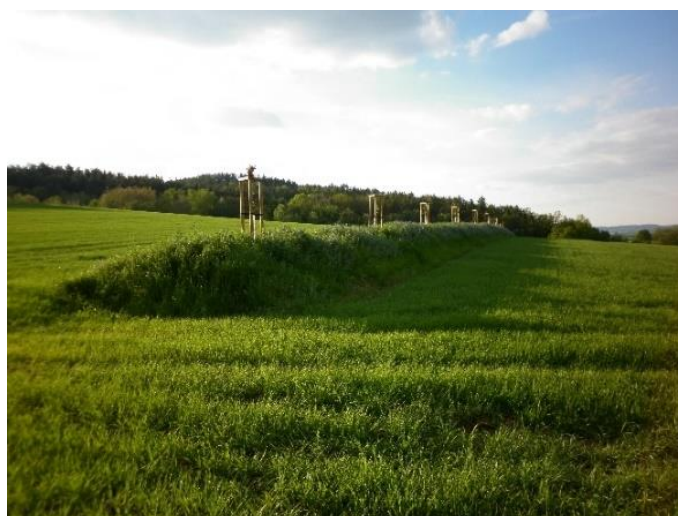
- Baulks (no 15 / A04)

#### Area characterisation

- **Area type:** undeveloped area
- **Landscape type:** farmland

#### Problem

In case of torrential rains, soil erosion occurs and thus the cultivated soil is degraded.



The realization of a baulk in the village Kuřimany  
Source: The Region of South Bohemia, The Section of Territorial Planning

#### Description and aim

The site is located on a sloping terrain. During a heavy rain event there was an erosive wash from the higher-lying neighbouring plot to the owner's plot. This owner therefore built a baulk at the edge of the farmland, which reduces surface runoff and prevents erosion of the washes, thus helping to safely drain the runoff during increased rainfall events. Moreover, this risk reduction measure has been enriched by appropriate planting, where trees help to increase the ecological stability of the landscape. It also serves as a measure against wind erosion and divides the soil block according to its land use (respectively according to land owners).

#### Effect of measure

The measure will prevent surface runoff which damages agriculturally cultivated soil, divides the soil block according to the way of use and is also a measure against wind erosion. Overall, this improves the soil used and the development of natural values.

#### Description of implementation

**Effect horizon:**  
long-term

**Involved stakeholders:**  
land owner, neighbouring owners

**Implementation:** 2018

**Initiator / responsible:**  
private investor

#### Lessons-learned

**Main success factor:**  
Ensuring flood protection of the location with permanent effect.

**Main challenge:**  
Preparation of flood control measures to make them functional and acceptable by the owner of the neighbouring property.

**Synergies / beneficial aspects:**  
Soil protection and thus better yield possibilities.  
Increasing the ecological stability of the landscape.

**Conflicts / Constraints:**  
Scope of landscaping, financial costs.

### Key message to others starting with a similar task

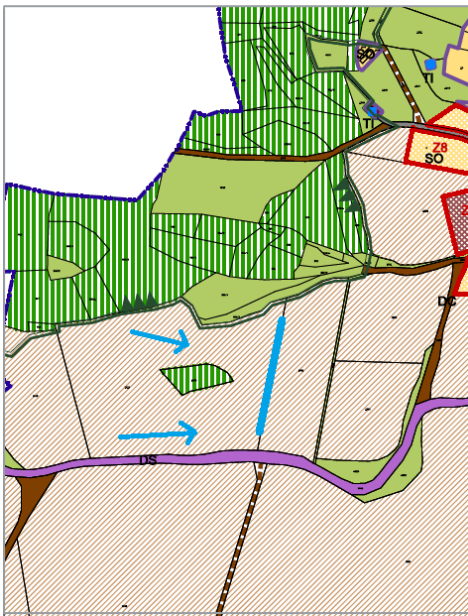
When cultivating agricultural land, it is important to think of the appropriate division of land blocks so as to ensure ecological stability of the landscape. This division can be done, for example, by a baulk, which can be enriched by planting shrubs or trees. The measure can be costly, but it will increase the value of land and will also benefit future generations of owners in the long term.

### Contact

The Region of South Bohemia, The Section of Territorial Planning

[www.kraj-jihocesky.cz](http://www.kraj-jihocesky.cz)

Contact list: [https://www.kraj-jihocesky.cz/ku\\_tseznam/os?id\\_os=94](https://www.kraj-jihocesky.cz/ku_tseznam/os?id_os=94)



Part of the spatial plan with proposal of the baulk and erosion flow  
(Source: The Region of South Bohemia)



Satellite view  
(Source: Mapy.cz)



View to the baulk with planted trees  
(Source: The Region of South Bohemia)



View of the former state before realization of the baulk  
(Source: Mapy.cz)