

## FACTSHEET RISK REDUCTION MEASURES

### Flood protection measures Strunkovice nad Blanicí

#### Where was it implemented?

Strunkovice nad Blanicí (South Bohemia Region, Czech Republic)

#### Fields of action

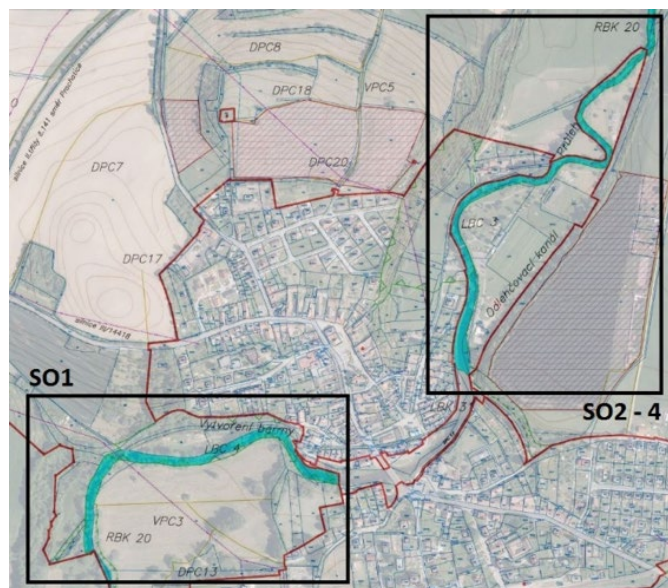
- Farmland, forests, watercourses, settlement area

#### Related to measure from the catalogue of measures

- Land consolidation processes
- Increasing the retention capacity of existing channels and floodplains
- Linear protection measures
- Small elevation oriented dikes
- Furrows

#### Area characterisation

- **Area type:** semi-urban
- **Landscape type:** floodplain



Source: The Region of South Bohemia, The Section of Territorial Planning

#### Problem

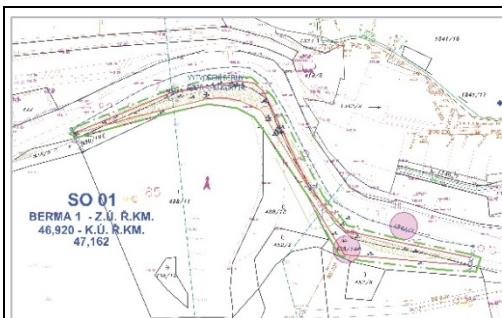
Heavy rain floods in the area destroy sports grounds and repeatedly floods the mill and its surroundings, thereby endangering the lives of the mill's inhabitants and flooding causing great material damage.

#### Description and aim

The subject of the project is the realization of a part of the joint risk reduction measures, namely the **construction of berms**, the **reduction of the leveling of the terrain** and the **bypass channel**. Everything is in accordance with the approved design of a comprehensive **land consolidation process** in the cadastral area of Strunkovice nad Blanicí.

The project can be divided into 2 separate localities (see map): In the SO1 locality, the terrain works of the Blanice riverbed was carried out and a berm (terraced, partially flooded part of the riverbed) was created to reduce the flow rate and water pressure to the left bank of the riverbed. In the SO2-4 locality, the riverbed was strengthened with the help of a berm. There were also created furrows to increase the capacity of the river profile. Following this part, a bypass channel (SO3) with a capacity for a 20-year flood (Q20) was also built. Part of the project was the replacement of sewerage under the furrow, the reduction of paved accesses in the furrows and the adjustment of the level of the power line.

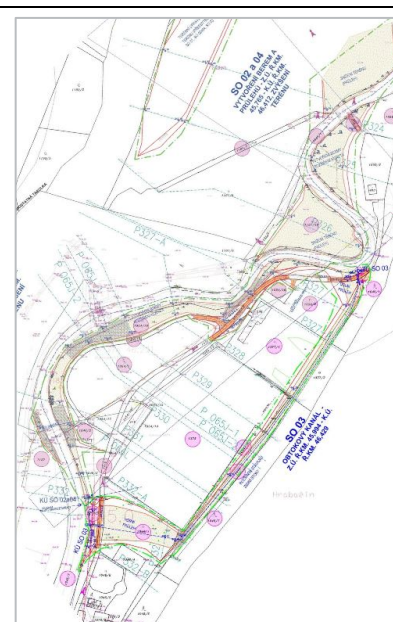
Soil taken from berms and furrows was used to increase the terrain on the plots below the mill.



Location SO 01 - documentation for building permit x spatial plan



Location SO 02 - 04 - spatial plan



Location SO 02 - 04 - building permit

## Effect of measure

An increase in the capacity of the Blanice riverbed was achieved by implementing berm along the riverbed and widening the bypass channel and creating furrows.

## Description of implementation

**Effect horizon:**  
long-term

**Involved stakeholders:**  
municipality Strunkovice nad Blaníci, land owners, mill's inhabitants

**Implementation:**  
7.3.2019/ 30.10.2018

**Initiator / responsible**  
State Land Office - regional office Prachatice

## Lessons-learned

**Main success factor:**  
Completed and approved land consolidation process. Without the process, the implementation of the risk reduction measures would nothave been possible. Administration and negotiation of land consolidation and settlement of the subsidy for implementation - ensured by the State Land Office.

**Main challenge:**  
Development of flood protection measures that are effective and at the same time accepted by the land owners. Part of the modifications took place on the land of foreign owners (non-municipal).

**Synergies / beneficial aspects:**  
Protection of the sports complex from flood damage. In the summer of 2019, a minor flood event occurred and the measures worked well. Only minor shortcomings were revealed, which were subsequently corrected.

**Conflicts / Constraints:**  
A compromise had to be found for the bank of the Blanice River and the deepening of the bottom: Here there was a contradiction between the demands of the fishermen from Vodňany (dredging limited, undergrown shores and old trees to provide shelter for the fish) and the requirements of the town of Strunkovice (to make the river bed as clear as possible).

## Key message to others starting with a similar task

"The implementation of the flood control measures in accordance with the approved design of a comprehensive land consolidation plan results in a quick and hassle-free solution without the need for further discussions with the landowners."



## Contact

The Region of South Bohemia, The Section of Territorial Planning

[www.kraj-jihocesky.cz](http://www.kraj-jihocesky.cz)

Contact list: [https://www.kraj-jihocesky.cz/ku\\_tseznam/os?id\\_os=94](https://www.kraj-jihocesky.cz/ku_tseznam/os?id_os=94)

State before implementation:



State during implementation:



State after implementation:



Source of all pictures: State Land Office - regional office Prachatice